



Linksys RT31P2

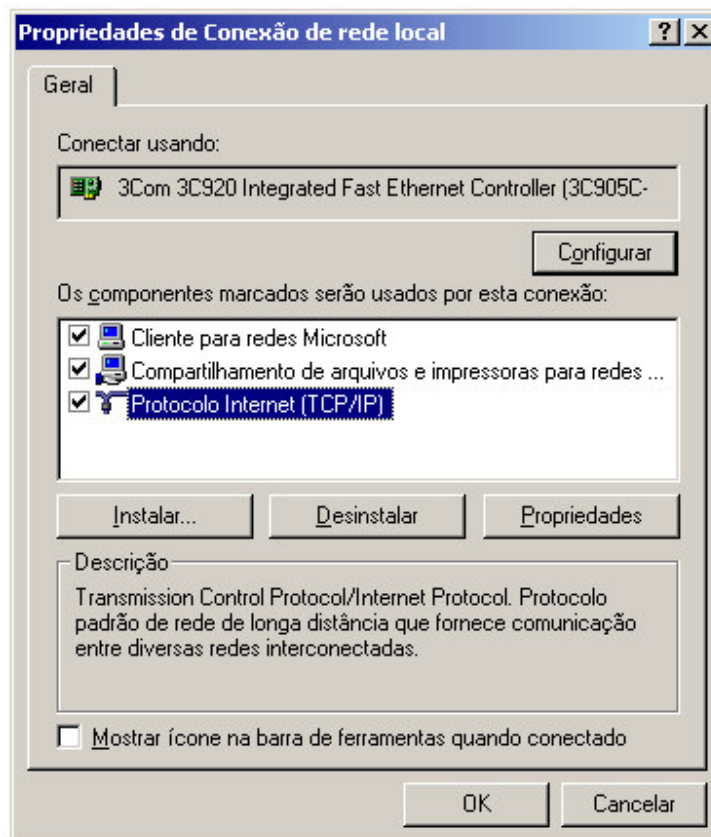
Configurando o computador para acessar as configurações do equipamento:

Você deverá deixar o seu computador conectado na porta LAN do seu RT31P2 e o mesmo deverá oferecer o IP automaticamente.

Para realizar a configuração para que o computador ofereça o IP automaticamente, siga os passos abaixo:

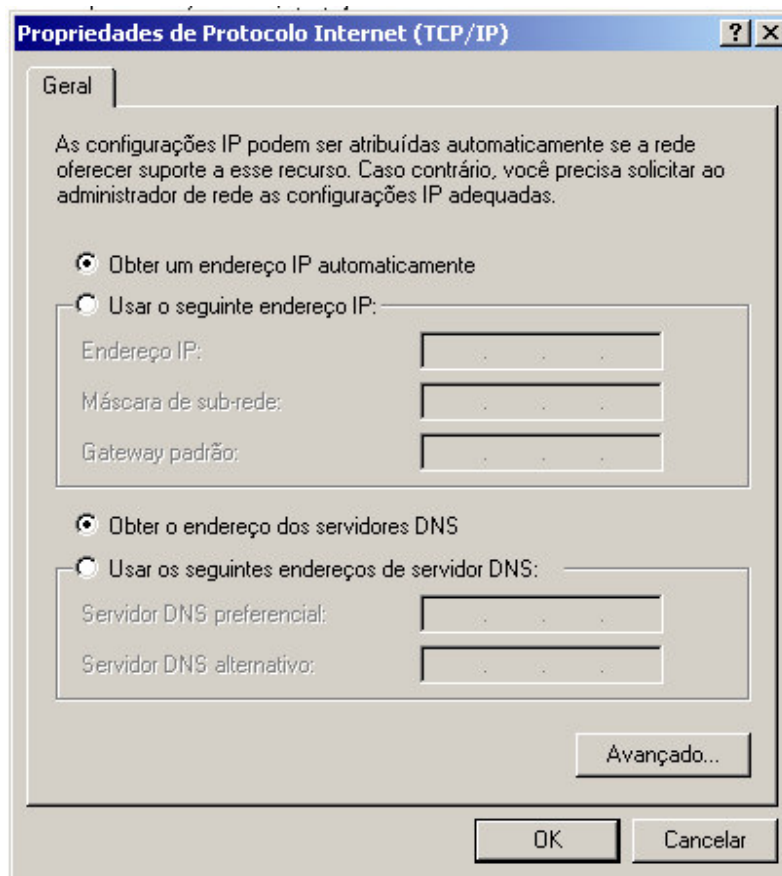
- Clique em Iniciar -> Configurações -> Painel de Controle;
- Abra a pasta Conexões dial-up e de rede;
- Clique com o segundo botão do mouse (geralmente o da direita) em Conexão de rede local e logo após clique com o primeiro botão (geralmente o da esquerda) em propriedades;

Aparecerá a seguinte tela:





Clique em cima de Protocolo Internet (TCP/IP) e logo após em Propriedades e sinalize as opções Obter um endereço IP automaticamente e Obter o endereço dos servidores DNS, conforme a figura abaixo:



Para acessar as configurações do ATA, insira o endereço 192.168.15.1 no Internet Explorer e o usuário e senha de acesso é **admin** e **admin**.



Na tela abaixo, você poderá configurar o padrão de internet. Após configurar salve e siga os passos abaixo.

Setup

Setup | Security | Voice | Applications & Gaming | Administration | Status

Basic Setup | DNS | MAC Address Clone | Advanced Routing

Internet Setup

Internet Connection Type: **Obtain an IP automatically**

Optional Settings (required by some ISPs)

Host Name:

Domain Name:

MTU: Enable Disable Size:

Network Setup

Router IP

Local IP Address:

Subnet Mask:

Local DHCP Server: Enable Disable

Start IP Address:

Number of Address:

DHCP Address Range: 192.168.15.100 to 192.168.15.149

Client Lease Time: minutes (0 means one day)

DNS 1:

DNS 2:

DNS 3:

WINS:

Time Setting

Time Zone:

Basic Setup

The Basic Setup screen is where basic configuration is performed. Some ISPs (Internet Service Providers) will require that you enter the DNS information. These settings can be obtained from your ISP. After you have configured these settings, you should set a router password from the Administration->Management screen.

Completing the Internet Setup section is all that is required to set up for your specific ISP. Please look at the table below to configure the Router for your Internet connection.

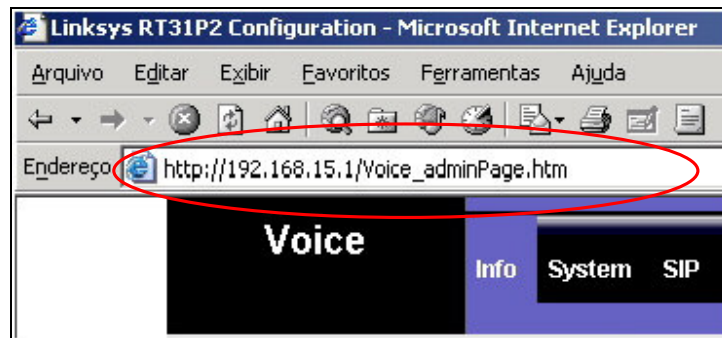
[More...](#)

Save Settings | Cancel Changes

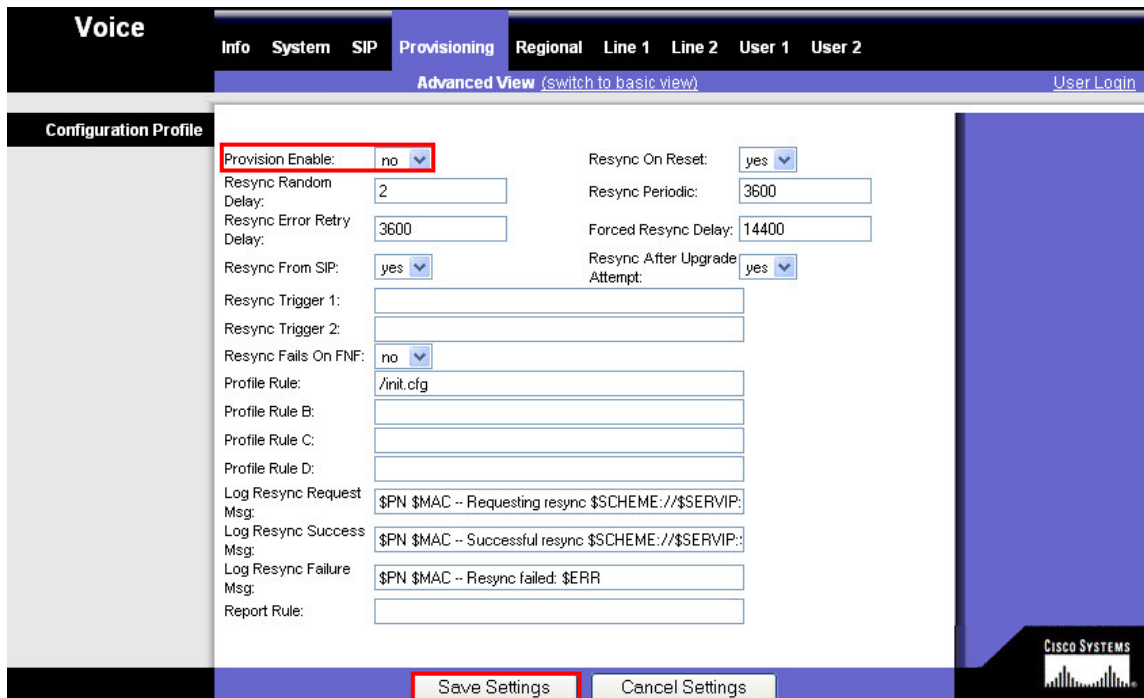
CISCO SYSTEMS



1. Após a versão do RT31P2 for 2.0.13 (Lib) Recomendamos que você acesse o link http://192.168.15.1/Voice_adminPage.htm, e faça as seguintes alterações abaixo:



- Clique em **Provisioning**, altere a opção **circulada em vermelho** e logo em seguida clique em **Save Settings**;



- Ao voltar a tela, clique em **Line 1** altere as opções **circuladas em vermelho** e logo em seguida clique em **Save Settings**;

Voice		Info	System	SIP	Provisioning	Regional	Line 1	Line 2	User 1	User 2
							Advanced View (switch to basic view)		User Login	
Streaming Audio Server (SAS)		Line Enable:	yes				SAS DLG Refresh Intvl:	30		
NAT Settings		SAS Enable:	no				NAT Keep Alive Enable:	no		
Network Settings		SAS Inbound RTP Sink:					NAT Keep Alive Dest:	\$PROXY		
SIP Settings		NAT Mapping Enable:	no				Network Jitter Level:	high		
		NAT Keep Alive Msg:	\$NOTIFY				Jitter Buffer Adjustment:	up and down		
		SIP TOS/DiffServ Value:	0x68				SIP 100REL Enable:	no		
		RTP TOS/DiffServ Value:	0xb8				Auth Resync-Reboot:	yes		
Call Feature Settings		SIP Port:	5060				SIP Remote-Party-ID:	no		
		EXT SIP Port:					SIP Debug Option:	none		
		SIP Proxy-Require:					Restrict Source IP:	no		
		SIP GUID:	no				Refer Target Bye Delay:	0		
		RTP Log Intvl:	0				Refer-To Target Contact:	no		
		Referor Bye Delay:	4				MOH Server:			
		Referee Bye Delay:	0				Conference Bridge URL:			
		Sticky 183:	no							
Proxy and Registration		Blind Attn-Xfer Enable:	no				Use Outbound Proxy:	yes		
		Xfer When Hangup Conf:	yes				Use OB Proxy In Dialog:	yes		
		Conference Bridge Ports:	3				Make Call Without Reg:	no		
		Proxy:	sip.voipdobrasil.com.br				Ans Call Without Reg:	no		
		Outbound Proxy:	sip.voipdobrasil.com.br				DNS SRV Auto Prefix:	no		
		Register:	yes				Proxy Redundancy Method:	Normal		
		Register Expires:	3600							
		Use DNS SRV:	yes							
		Proxy Fallback Intvl:	3600							
		Voice Mail Server:								
Subscriber Information		Display Name:	Seu Nome				User ID:	Login		
		Password:	Senha				Use Auth ID:	no		
		Auth ID:								
		Mini Certificate:								
		SRTP Private Key:								



Supplementary Service Subscription	Call Waiting Serv: <input type="button" value="yes"/>	Block CID Serv: <input type="button" value="yes"/>
	Block ANC Serv: <input type="button" value="yes"/>	Dist Ring Serv: <input type="button" value="yes"/>
	Cfwd All Serv: <input type="button" value="yes"/>	Cfwd Busy Serv: <input type="button" value="yes"/>
	Cfwd No Ans Serv: <input type="button" value="yes"/>	Cfwd Sel Serv: <input type="button" value="yes"/>
	Cfwd Last Serv: <input type="button" value="yes"/>	Block Last Serv: <input type="button" value="yes"/>
	Accept Last Serv: <input type="button" value="yes"/>	DND Serv: <input type="button" value="yes"/>
	CID Serv: <input type="button" value="yes"/>	CWCID Serv: <input type="button" value="yes"/>
	Call Return Serv: <input type="button" value="yes"/>	Call Back Serv: <input type="button" value="yes"/>
	Three Way Call Serv: <input type="button" value="yes"/>	Three Way Conf Serv: <input type="button" value="yes"/>
	Attn Transfer Serv: <input type="button" value="yes"/>	Unattn Transfer Serv: <input type="button" value="yes"/>
	MVM Serv: <input type="button" value="yes"/>	VMMI Serv: <input type="button" value="yes"/>
	Speed Dial Serv: <input type="button" value="yes"/>	Secure Call Serv: <input type="button" value="yes"/>
	Referral Serv: <input type="button" value="yes"/>	Feature Dial Serv: <input type="button" value="yes"/>
	Service Announcement Serv: <input type="button" value="no"/>	
Audio Configuration	Preferred Codec: <input type="button" value="G729a"/>	Silence Supp Enable: <input type="button" value="no"/>
	Use Pref Codec Only: <input type="button" value="no"/>	Silence Threshold: <input type="button" value="medium"/>
	G729a Enable: <input type="button" value="yes"/>	Echo Canc Enable: <input type="button" value="yes"/>
	G723 Enable: <input type="button" value="yes"/>	Echo Canc Adapt Enable: <input type="button" value="yes"/>
	G726-16 Enable: <input type="button" value="yes"/>	Echo Supp Enable: <input type="button" value="yes"/>
	G726-24 Enable: <input type="button" value="yes"/>	FAX CED Detect Enable: <input type="button" value="yes"/>
	G726-32 Enable: <input type="button" value="yes"/>	FAX CNG Detect Enable: <input type="button" value="yes"/>
	G726-40 Enable: <input type="button" value="yes"/>	FAX Passthru Codec: <input type="button" value="G711u"/>
	FAX Codec Symmetric: <input type="button" value="yes"/>	FAX Passthru Method: <input type="button" value="NSE"/>
	DTMF Tx Method: <input type="button" value="Auto"/>	FAX Process NSE: <input type="button" value="yes"/>
	Hook Flash Tx Method: <input type="button" value="None"/>	FAX Disable ECAN: <input type="button" value="no"/>
	Release Unused Codec: <input type="button" value="yes"/>	
Dial Plan	Dial Plan: <input type="text" value="[*][*][*][*][3469]11000[2-9]xxxxx1xxx[2-9]xxxxxS0xxxx"/>	Emergency Number: <input type="text"/>
	Enable IP Dialing: <input type="button" value="no"/>	
FXS Port Polarity Configuration	Idle Polarity: <input type="button" value="Forward"/>	Caller Conn Polarity: <input type="button" value="Forward"/>
	Callee Conn Polarity: <input type="button" value="Forward"/>	
<input type="button" value="Save Settings"/>		<input type="button" value="Cancel Settings"/>

Assim o seu ATA estará configurado e funcionando corretamente com a Voip do Brasil. Caso haja alguma irregularidade, recomendamos que você tente refaça a configuração.