



Linksys WRTP54G

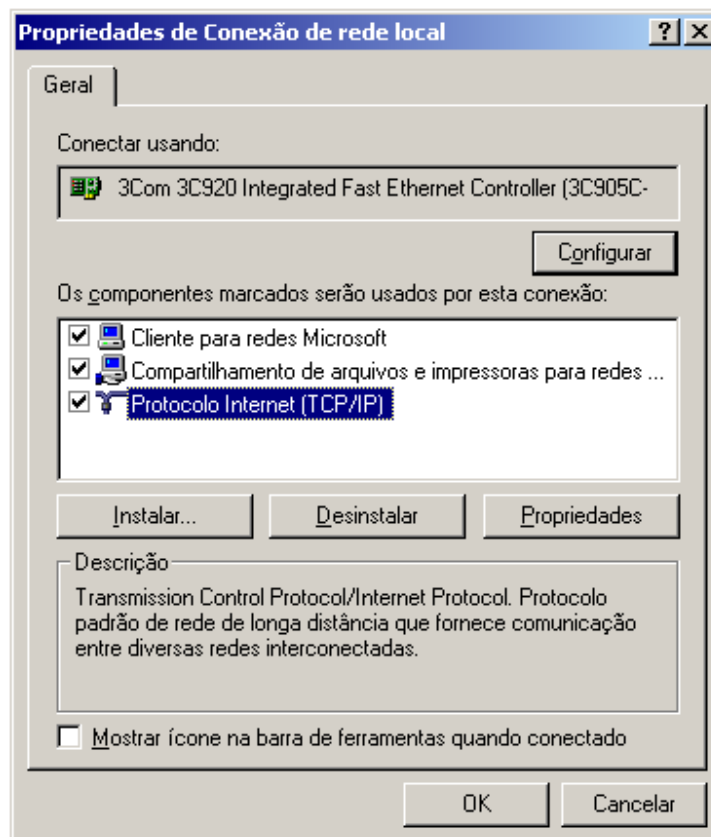
Configurando o computador para acessar as configurações do equipamento:

Você deverá deixar o seu computador conectado na porta LAN do seu WRTP54G e o mesmo deverá oferecer o IP automaticamente.

Para realizar a configuração para que o computador ofereça o IP automaticamente, siga os passos abaixo:

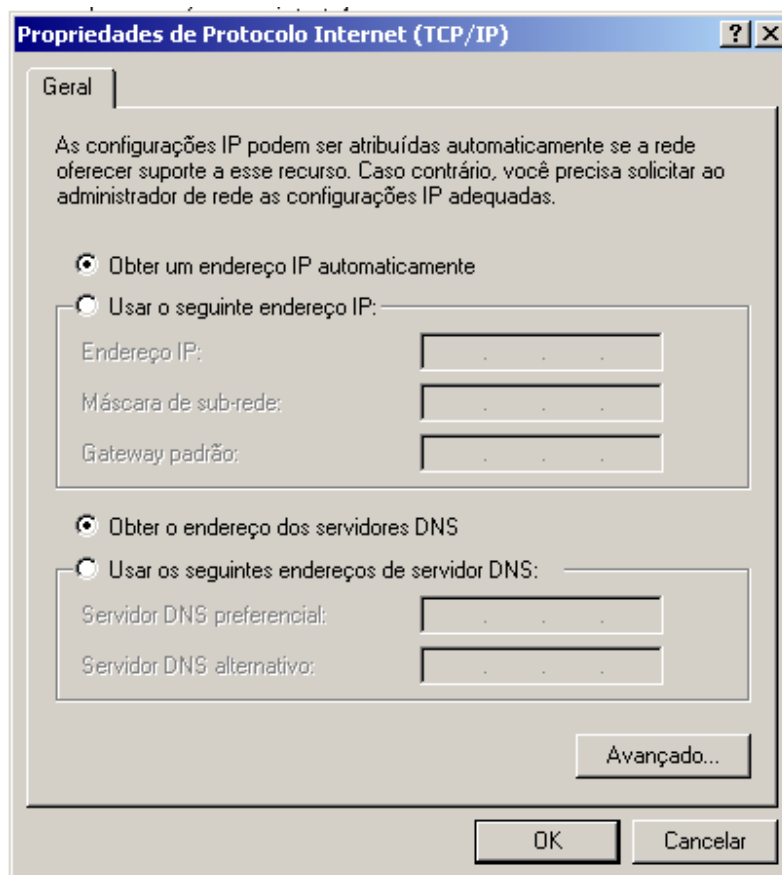
- Clique em Iniciar -> Configurações -> Painel de Controle;
- Abra a pasta Conexões dial-up e de rede;
- Clique com o segundo botão do mouse (geralmente o da direita) em Conexão de rede local e logo após clique com o primeiro botão (geralmente o da esquerda) em propriedades;

Aparecerá a seguinte tela:



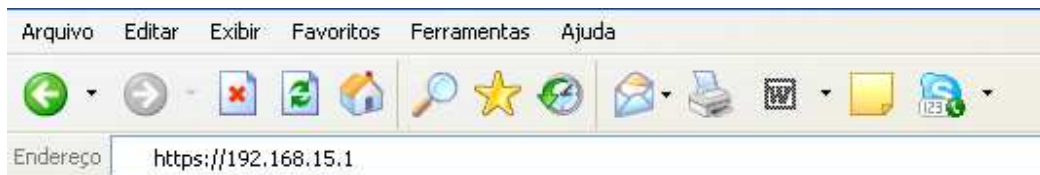


Clique em cima de Protocolo Internet (TCP/IP) e logo após em Propriedades e sinalize as opções Obter um endereço IP automaticamente e Obter o endereço dos servidores DNS, conforme a figura abaixo:





Para acessar as configurações do ATA, insira o endereço 192.168.15.1 no Internet Explorer, conforme as figuras abaixo:



OBS: O seu computador deve estar conectado à uma das portas LAN que o ATA oferece.

Username: admin
Password : admin



Na tela abaixo, você poderá configurar o padrão de internet. Após configurar salve e siga os passos abaixo:

Setup

Setup | **Wireless** | Security | Access Restrictions | Applications & Gaming | Administration | Status | Voice

Basic Setup | DDNS | MAC Address Clone | Advanced Routing

Internet Setup

Internet Connection Type: Obtain an IP automatically

Optional Settings (required by some ISPs)

Network Setup

Router IP

Local IP Address: 192 . 168 . 15 . 1

Subnet Mask: 255 . 255 . 255 . 0

Local DHCP Server: Enable Disable

DNS Proxy: Enable Disable

Start IP Address: 192.168.15.100

Number of Address: 50

DHCP Address Range: 192.168.15.100 to 192.168.15.149

Client Lease Time: 0 minutes (0 means one day)

DNS 1: 0 . 0 . 0 . 0

DNS 2: 0 . 0 . 0 . 0

DNS 3: 0 . 0 . 0 . 0

WINS: 0 . 0 . 0 . 0

Basic Setup

The Basic Setup screen is where basic configuration is performed. Some ISPs (Internet Service Providers) will require that you enter the DNS information. These settings can be obtained from your ISP. After you have configured these settings, you should set a router password from the Administration->Management screen.

Completing the **Internet Setup** section is all that is required to set up for your specific ISP. Please look at the table below to configure the Router for your Internet connection.

[More...](#)

Save Settings Cancel Changes

CISCO SYSTEMS



Para configurar a sua conta Vono em seu WRTP54G, clique em **Voice, Admin Login** (situado no canto superior a direita) e **Switch to Advanced View** (situado abaixo de Line 1) e siga as configurações abaixo:

- Clique em **Provisioning**, altere a opção **circulada em vermelho** e logo em seguida clique em **Save Settings**;

The screenshot shows the Cisco configuration interface for a VoIP system. The top navigation bar includes 'Voice', 'Setup', 'Wireless', 'Security', 'Access Restrictions', 'Applications & Gaming', 'Administration', 'Status', and 'Voice'. Below this, there are sub-tabs for 'Info', 'System', 'SIP', 'Provisioning', 'Regional', 'Line 1', 'Line 2', 'User 1', and 'User 2'. The 'Provisioning' tab is selected, and the view is set to 'Advanced View'. The 'Configuration Profile' section is visible, with the following settings:

Provision Enable:	no	Resync On Reset:	yes
Resync Random Delay:	2	Resync Periodic:	3600
Resync Error Retry Delay:	3600	Forced Resync Delay:	14400
Resync From SIP:	yes	Resync After Upgrade Attempt:	yes
Resync Trigger 1:			
Resync Trigger 2:			
Resync Fails On FNF:	yes		
Profile Rule:	/wrtp54g.cfg		
Profile Rule B:			
Profile Rule C:			
Profile Rule D:			
Log Resync Request Msg:	\$PN \$MAC -- Requesting resync \$SCHEME://\$SERVIP:		
Log Resync Success Msg:	\$PN \$MAC -- Successful resync \$SCHEME://\$SERVIP:		
Log Resync Failure Msg:	\$PN \$MAC -- Resync failed: \$ERR		
Report Rule:			

At the bottom of the configuration page, there are two buttons: 'Save Settings' (highlighted with a red box) and 'Cancel Settings'. The Cisco Systems logo is visible in the bottom right corner.



- Ao voltar a tela, clique em **Line 1** altere as opções **circuladas em vermelho** e logo em seguida clique em **Save Settings**;

Voice		Setup	Wireless	Security	Access Restrictions	Applications & Gaming	Administration	Status	Voice	
		Info	System	SIP	Provisioning	Regional	Line 1	Line 2	User 1	User 2
Advanced View (switch to basic view) User Login										
NAT Settings		Line Enable:	<input type="text" value="yes"/>							
Network Settings		NAT Mapping Enable:	<input type="text" value="no"/>		NAT Keep Alive Enable:	<input type="text" value="no"/>				
		NAT Keep Alive Msg:	<input type="text" value="\$NOTIFY"/>		NAT Keep Alive Dest:	<input type="text" value="\$PROXY"/>				
SIP Settings		SIP ToS/DiffServ Value:	<input type="text" value="0x68"/>		SIP CoS Value:	<input type="text" value="3"/> [0-7]				
		RTP ToS/DiffServ Value:	<input type="text" value="0xb8"/>		RTP CoS Value:	<input type="text" value="6"/> [0-7]				
		SIP Port:	<input type="text" value="1234"/>		SIP 100REL Enable:	<input type="text" value="no"/>				
		EXT SIP Port:	<input type="text"/>		Auth Resync-Reboot:	<input type="text" value="yes"/>				
		SIP Proxy-Require:	<input type="text"/>		SIP Remote-Party-ID:	<input type="text" value="no"/>				
		SIP Debug Option:	<input type="text" value="none"/>		RTP Log Intvl:	<input type="text" value="0"/>				
		Restrict Source IP:	<input type="text" value="no"/>		Referor Bye Delay:	<input type="text" value="4"/>				
		Refer Target Bye Delay:	<input type="text" value="0"/>		Referee Bye Delay:	<input type="text" value="0"/>				
		Refer-To Target Contact:	<input type="text" value="yes"/>		Sticky 183:	<input type="text" value="no"/>				
Call Feature Settings		Blind Attn-Xfer Enable:	<input type="text" value="no"/>		MOH Server:	<input type="text"/>				
		Xfer When Hangup Conf:	<input type="text" value="yes"/>		Conference Bridge URL:	<input type="text"/>				
		Conference Bridge Ports:	<input type="text" value="3"/>							
Proxy and Registration		Proxy:	<input type="text" value="sip.voipdobrasil.com.br"/>		Use Outbound Proxy:	<input type="text" value="yes"/>				
		Outbound Proxy:	<input type="text" value="sip.voipdobrasil.com.br"/>		Use OB Proxy In Dialog:	<input type="text" value="yes"/>				
		Register:	<input type="text" value="yes"/>		Make Call Without Reg:	<input type="text" value="no"/>				
		Register Expires:	<input type="text" value="3600"/>		Ans Call Without Reg:	<input type="text" value="no"/>				
		Use DNS SRV:	<input type="text" value="yes"/>		DNS SRV Auto Prefix:	<input type="text" value="no"/>				
		Proxy Fallback Intvl:	<input type="text" value="3600"/>		Proxy Redundancy Method:	<input type="text" value="Normal"/>				
		Voice Mail Server:	<input type="text"/>		Mailbox Subscribe Expires:	<input type="text" value="2147483647"/>				



Subscriber Information	Display Name: Seu Nome	User ID: Login
	Password: Senha	Use Auth ID: no
	Auth ID:	
Supplementary Service Subscription	Call Waiting Serv: yes	Block CID Serv: yes
	Block ANC Serv: yes	Dist Ring Serv: yes
	Cfwd All Serv: yes	Cfwd Busy Serv: yes
	Cfwd No Ans Serv: yes	Cfwd Sel Serv: yes
	Cfwd Last Serv: yes	Block Last Serv: yes
	Accept Last Serv: yes	DND Serv: yes
	CID Serv: yes	CWID Serv: yes
	Call Return Serv: yes	Call Back Serv: yes
	Three Way Call Serv: yes	Three Way Conf Serv: yes
	Attn Transfer Serv: yes	Unattn Transfer Serv: yes
	MVM Serv: yes	VMM Serv: yes
	Speed Dial Serv: yes	Secure Call Serv: yes
	Referral Serv: yes	Feature Dial Serv: yes
Audio Configuration	Preferred Codec: G729a	Silence Supp Enable: no
	Use Pref Codec Only: no	Silence Threshold: medium
	G729a Enable: yes	Echo Canc Enable: yes
	G723 Enable: yes	Echo Canc Adapt Enable: yes
	Echo Supp Enable: yes	FAX CED Detect Enable: yes
	G726-32 Enable: yes	FAX CNG Detect Enable: yes
	G726-40 Enable: yes	FAX Passthru Codec: G711u
	DTMF Process INFO: yes	FAX Codec Symmetric: yes
	DTMF Process AVT: yes	FAX Passthru Method: NSE
	DTMF Tx Method: Auto	FAX Process NSE: yes
	Hook Flash Tx Method: None	FAX Disable ECAN: no
	Release Unused Codec: yes	FAX Enable T38: yes
Dial Plan	Dial Plan: [^xx][3469]1110 00 [2-9]xxxxx1xxx[2-9]xxxxxS0 xxxxxxxx	Emergency Number:
	Enable IP Dialing: no	
FXS Port Polarity Configuration	Idle Polarity: Forward	Caller Conn Polarity: Forward
	Callee Conn Polarity: Forward	
	Save Settings	Cancel Settings

Assim o seu ATA estará configurado e funcionando corretamente com a Voip do Brasil. Caso haja alguma irregularidade, recomendamos que você refaça as configurações.