

## Linksys RT31P2

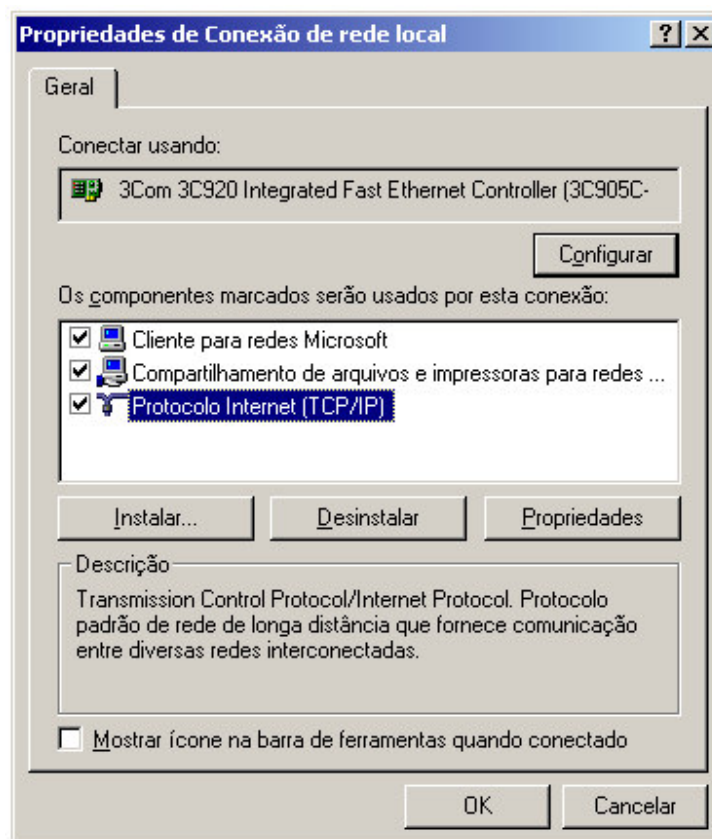
Configurando o computador para acessar as configurações do equipamento:

Você deverá deixar o seu computador conectado na porta LAN do seu RT31P2 e o mesmo deverá oferecer o IP automaticamente.

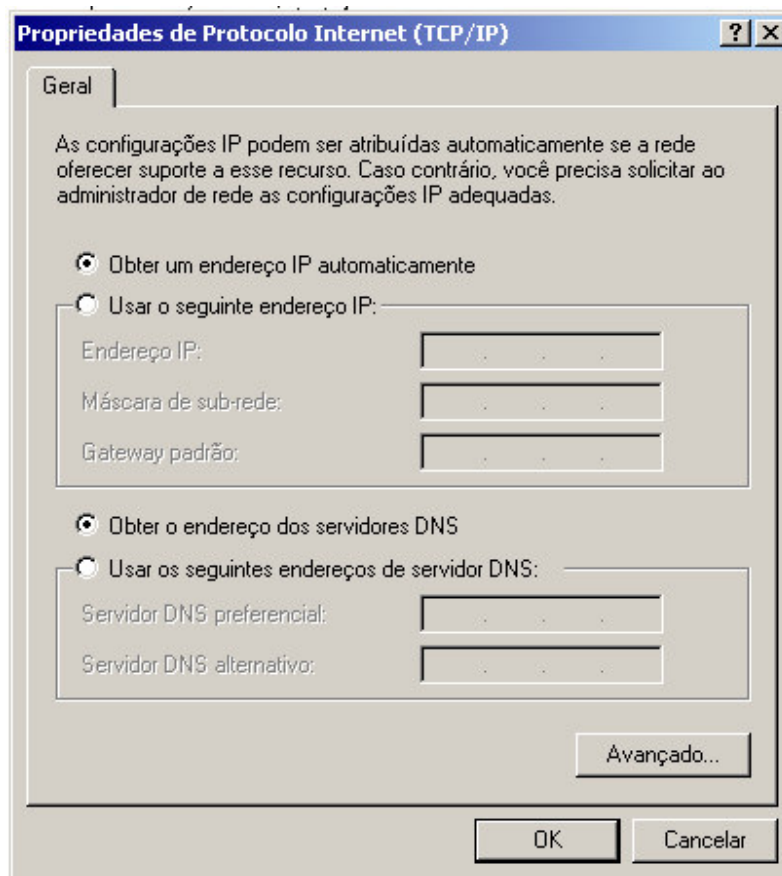
Para realizar a configuração para que o computador ofereça o IP automaticamente, siga os passos abaixo:

- Clique em Iniciar -> Configurações -> Painel de Controle;
- Abra a pasta Conexões dial-up e de rede;
- Clique com o segundo botão do mouse (geralmente o da direita) em Conexão de rede local e logo após clique com o primeiro botão (geralmente o da esquerda) em propriedades;

Aparecerá a seguinte tela:



Clique em cima de Protocolo Internet (TCP/IP) e logo após em Propriedades e sinalize as opções Obter um endereço IP automaticamente e Obter o endereço dos servidores DNS, conforme a figura abaixo:



Para acessar as configurações do ATA, insira o endereço 192.168.15.1 no Internet Explorer e o usuário e senha de acesso é **admin** e **admin**.

---

Na tela abaixo, você poderá configurar o padrão de internet. Após configurar salve e siga os passos abaixo.

Setup

Security
Voice
Applications & Gaming
Administration
Status

Basic Setup
DNS
MAC Address Clone
Advanced Routing

Internet Setup

Internet Connection Type

Optional Settings  
(required by some ISPs)

---

Network Setup

Router IP

---

Network Address  
Server Settings (DHCP)

---

Time Setting

Obtain an IP automatically

Host Name:

Domain Name:

MTU:  Enable  Disable Size:

---

Local IP Address:  .  .  .

Subnet Mask:  .  .  .

---

Local DHCP Server:  Enable  Disable

Start IP Address:

Number of Address:

DHCP Address Range: 192.168.15.100 to 192.168.15.149

Client Lease Time:  minutes (0 means one day)

DNS 1:  .  .  .

DNS 2:  .  .  .

DNS 3:  .  .  .

WINS:  .  .  .

---


Time Zone:

Basic Setup

The Basic Setup screen is where basic configuration is performed. Some ISPs (Internet Service Providers) will require that you enter the DNS information. These settings can be obtained from your ISP. After you have configured these settings, you should set a router password from the Administration Management screen.

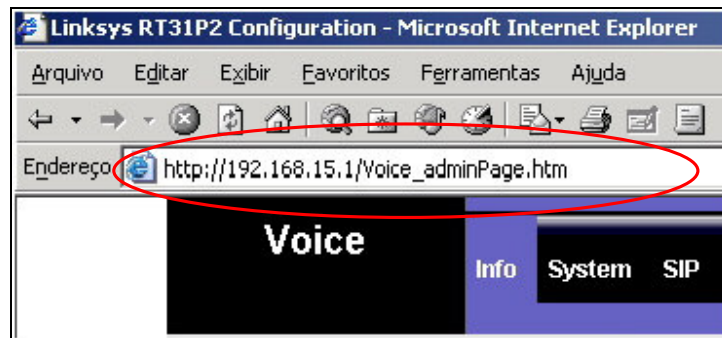
Completing the Internet Setup section is all that is required to set up for your specific ISP. Please look at the table below to configure the Router for your Internet connection.

More...

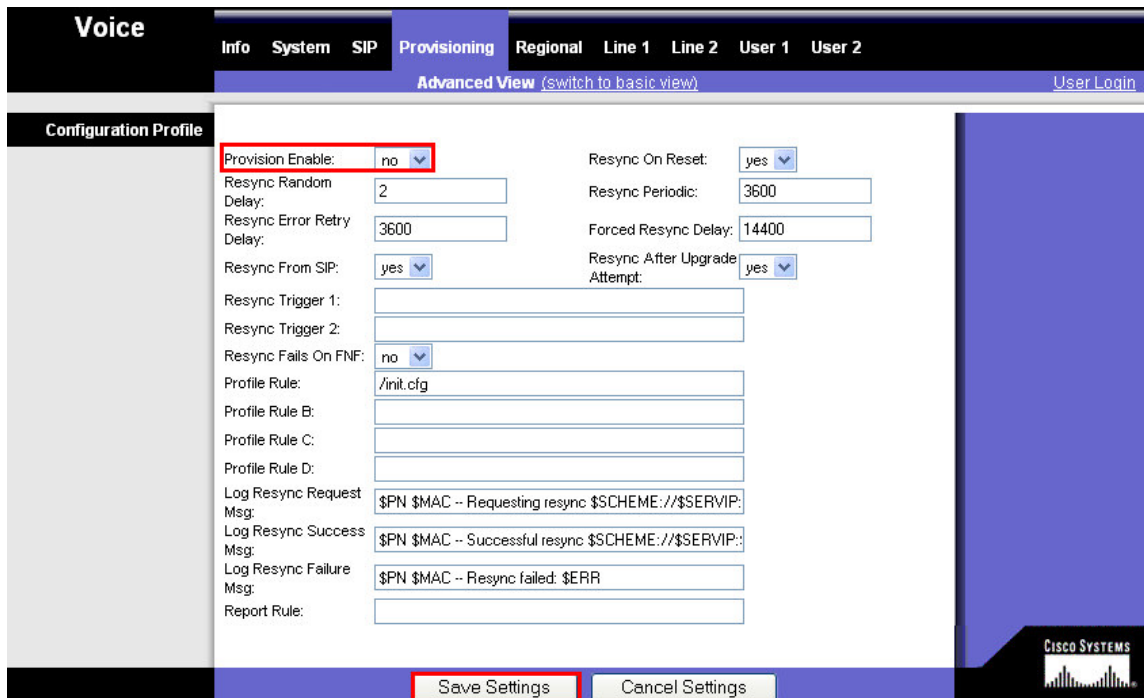


Save Settings
Cancel Changes

1. Após a versão do RT31P2 for 2.0.13 (Lib) Recomendamos que você acesse o link [http://192.168.15.1/Voice\\_adminPage.htm](http://192.168.15.1/Voice_adminPage.htm), e faça as seguintes alterações abaixo:



- Clique em **Provisioning**, altere a opção **circulada em vermelho** e logo em seguida clique em **Save Settings**;



- Ao voltar a tela, clique em **Line 1** altere as opções **circuladas em vermelho** e logo em seguida clique em **Save Settings**;

Voice		Info	System	SIP	Provisioning	Regional	Line 1	Line 2	User 1	User 2	
							Advanced View (switch to basic view)		User Login		
Streaming Audio Server (SAS)		Line Enable:	yes		SAS Enable:		no		SAS DLG Refresh Intvl:	30	
NAT Settings		SAS Inbound RTP Sink:			NAT Mapping Enable:		no		NAT Keep Alive Enable:	no	
Network Settings		NAT Keep Alive Msg:	\$NOTIFY		NAT Keep Alive Dest:		\$PROXY		Network Jitter Level:	high	
SIP Settings		SIP TOS/DiffServ Value:	0x68		RTP TOS/DiffServ Value:		0xb8		Jitter Buffer Adjustment:	up and down	
Call Feature Settings		SIP Port:	5060		SIP 100REL Enable:		no		Auth Resync-Reboot:	yes	
Proxy and Registration		EXT SIP Port:			SIP Proxy-Require:				SIP Remote-Party-ID:	no	
		SIP GUID:	no		SIP Debug Option:		none		Restrict Source IP:	no	
		RTP Log Intvl:	0		Refer Target Bye Delay:		0		Refer-To Target Contact:	no	
		Referer Bye Delay:	4		MOH Server:				Conference Bridge URL:		
		Referee Bye Delay:	0		Use Outbound Proxy:		yes		Use OB Proxy In Dialog:	yes	
		Sticky 183:	no		Outbound Proxy:		voipdobrasil.net.br		Make Call Without Reg:	no	
		Blind Attn-Xfer Enable:	no		Register:		yes		Ans Call Without Reg:	no	
		Xfer When Hangup Conf:	yes		Register Expires:		3600		DNS SRV Auto Prefix:	no	
		Conference Bridge Ports:	3		Use DNS SRV:		yes		Proxy Redundancy Method:	Normal	
Subscriber Information		Proxy Fallback Intvl:	3600		Proxy:		voipdobrasil.net.br		User ID:	Login	
		Voice Mail Server:			Outbound Proxy:		voipdobrasil.net.br		Use Auth ID:	no	
		Display Name:	Seu Nome		Register Expires:		3600				
		Password:	Senha		Proxy Fallback Intvl:		3600				
		Auth ID:			Voice Mail Server:						
		Mini Certificate:			Auth ID:						
		SRTP Private Key:			Mini Certificate:						

Supplementary Service Subscription	
Call Waiting Serv:	yes
Block ANC Serv:	yes
Cfwd All Serv:	yes
Cfwd No Ans Serv:	yes
Cfwd Last Serv:	yes
Accept Last Serv:	yes
CID Serv:	yes
Call Return Serv:	yes
Three Way Call Serv:	yes
Attn Transfer Serv:	yes
MVM Serv:	yes
Speed Dial Serv:	yes
Referral Serv:	yes
Service Announcement Serv:	no
Block CID Serv:	yes
Dist Ring Serv:	yes
Cfwd Busy Serv:	yes
Cfwd Sel Serv:	yes
Block Last Serv:	yes
DND Serv:	yes
CWCID Serv:	yes
Call Back Serv:	yes
Three Way Conf Serv:	yes
Unattn Transfer Serv:	yes
VMMI Serv:	yes
Secure Call Serv:	yes
Feature Dial Serv:	yes

Audio Configuration	
Preferred Codec:	G729a
Use Pref Codec Only:	no
G729a Enable:	yes
G723 Enable:	yes
G726-16 Enable:	yes
G726-24 Enable:	yes
G726-32 Enable:	yes
G726-40 Enable:	yes
FAX Codec Symmetric:	yes
DTMF Tx Method:	Auto
Hook Flash Tx Method:	None
Release Unused Codec:	yes
Silence Supp Enable:	no
Silence Threshold:	medium
Echo Canc Enable:	yes
Echo Canc Adapt Enable:	yes
Echo Supp Enable:	yes
FAX CED Detect Enable:	yes
FAX CNG Detect Enable:	yes
FAX Passthru Codec:	G711u
FAX Passthru Method:	NSE
FAX Process NSE:	yes
FAX Disable ECAN:	no

Dial Plan	
Dial Plan:	[*xx]*[3469]11000[2-9]xxxxx1xxx[2-9]xxxxS0xxxx
Enable IP Dialing:	no
Emergency Number:	

FXS Port Polarity Configuration	
Idle Polarity:	Forward
Caller Conn Polarity:	Forward
Callee Conn Polarity:	Forward

Assim o seu ATA estará configurado e funcionando corretamente com a Voip do Brasil. Caso haja alguma irregularidade, recomendamos que você tente refaça a configuração.